

norbert wissing

musica 6

per flauto solo

2003

MUSICA NO. 6

Norbert Wissing

2003-31-05

Largo

Flute

f *f* *pp* *f*

f *pp*

10 ACCEL-----
CRESC-----

mf

f

-----ZEER SNEL

ff

tr $\frac{20}{\text{tr}}$ A TEMPO

ff *ffff* *pp*

IETS SNELLER

mp *p* *mf* *p*

30

mf

40 A TEMPO SUB SNEL

ff *fff* *mf* MOLTO

A TEMPO SNELLER 50 A TEMPO

ffff *mf* *pp*

MISTERIOSO

ppp p

RIT-----
ppp mp ppp 16-06-'03

2 SNEL

SCHERZO EN TRIO

f p

f

70
mp

A TEMPO
pp f

80
pp

f

RIT-----TRIO NIET SNEL

pp

90

pp

pp

A tempo

ff

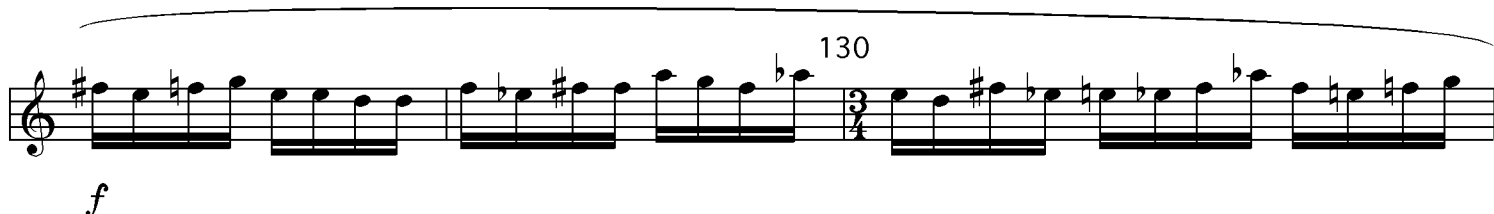
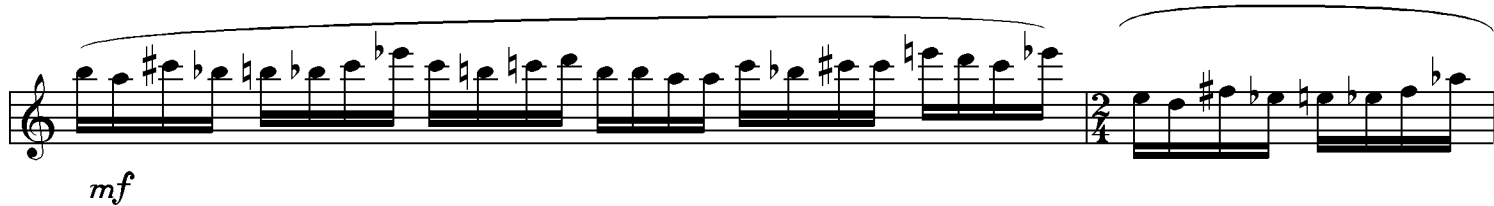
ff



ATTACCA
3 MESTO



ACCEL



tr *ff* *fff* SNEL

Musical staff with notes, trills, and dynamics. The first measure has a dynamic of *ff*. The second measure has a dynamic of *fff* and a trill marked 'tr'. The third measure has a dynamic of *fff* and the tempo marking 'SNEL'. The staff contains a sequence of notes with various accidentals and articulation marks.

LANGZAAM *pp* 5

Musical staff with notes, dynamics, and a five-fingered chord. The tempo marking 'LANGZAAM' is present. The dynamic is *pp*. A five-fingered chord is marked with a '5' above it. The staff contains a sequence of notes with various accidentals and articulation marks.

140 EPILOOG *f* *f* *pp*

Musical staff with notes, dynamics, and five-fingered chords. The measure number '140' is at the start. The section is titled 'EPILOOG'. Dynamics are *f*, *f*, and *pp*. Five-fingered chords are marked with a '5' above them. The staff contains a sequence of notes with various accidentals and articulation marks.

f *f* *pp* *f*

Musical staff with notes, dynamics, and five-fingered chords. Dynamics are *f*, *f*, *pp*, and *f*. Five-fingered chords are marked with a '5' above them. The staff contains a sequence of notes with various accidentals and articulation marks.

150 *pp*

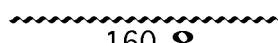

Musical staff with notes, dynamics, and five-fingered chords. The measure number '150' is at the start. The dynamic is *pp*. Five-fingered chords are marked with a '5' above them. The staff contains a sequence of notes with various accidentals and articulation marks.


pp *pp*

Musical staff with notes, dynamics, and five-fingered chords. Dynamics are *pp* and *pp*. Five-fingered chords are marked with a '5' above them. The staff contains a sequence of notes with various accidentals and articulation marks.


ACCEL

Musical staff with notes and an acceleration marking. The marking 'ACCEL' is at the start. The staff contains a sequence of notes with various accidentals and articulation marks.

tr  *160*  ; NIET ZO SNEL



fff *ppp*



pppp FINE 29-6-2003